

Dear School Swimming Contact,

Here are your 2015/2016 final Swimming results and the subsequent analysis of them so you can share the information with your colleagues. The service average contains the results from all year groups of all Infant, Primary and Special schools that swam with the service.

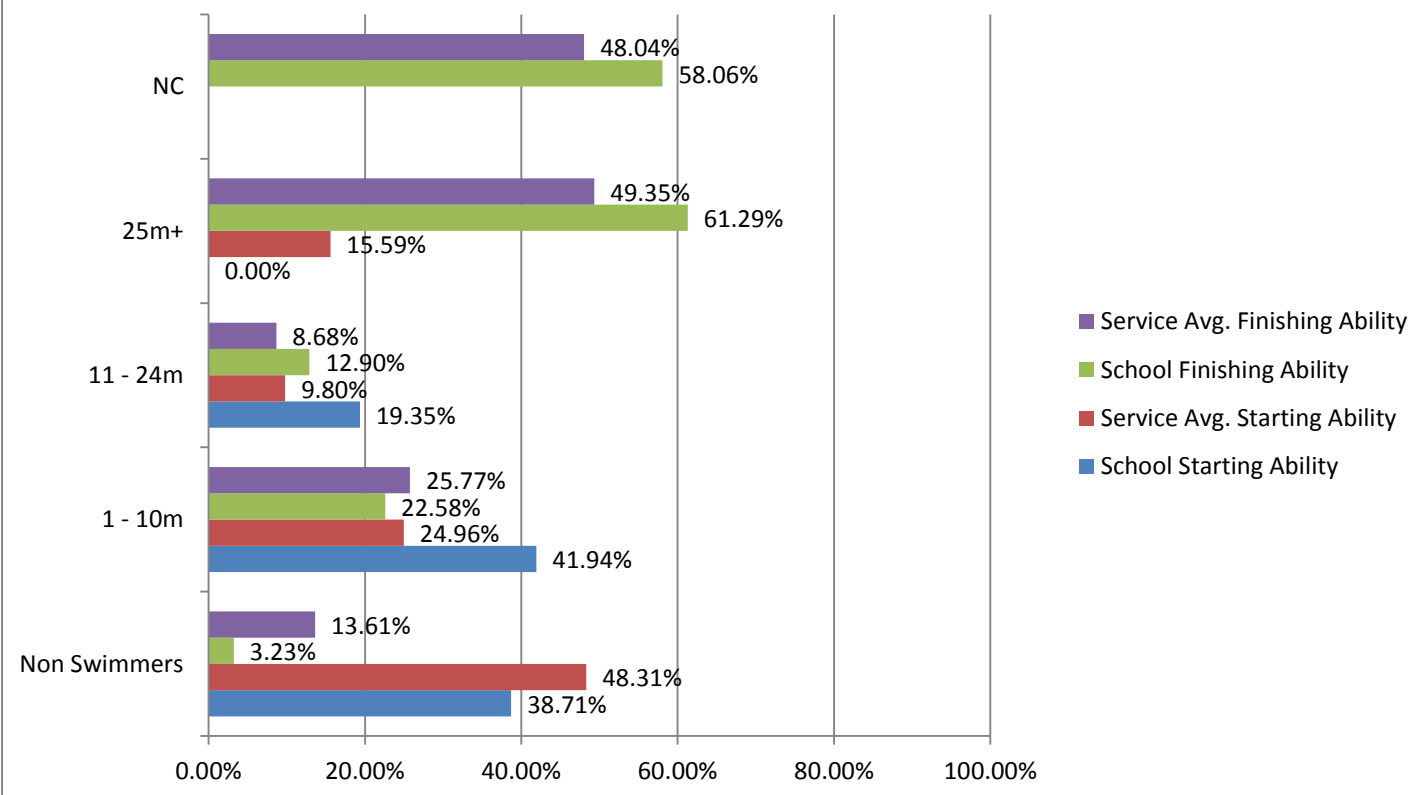
### Swimming Service average compared to 2014/2015

	Starting ability		Finishing Ability	
	2014/2015	2015/2016	2014/2015	2015/2016
<b>Non Swimmer</b>	50.45%	48.31%	13.45%	13.61%
<b>1 – 10m</b>	22.79%	24.96%	25.45%	25.77%
<b>11 – 24m</b>	9.09%	9.80%	8.15%	8.68%
<b>25m+</b>	16.74%	15.59%	52.24%	49.35%
<b>National Curriculum</b>			50.51%	48.04%

### Your school results

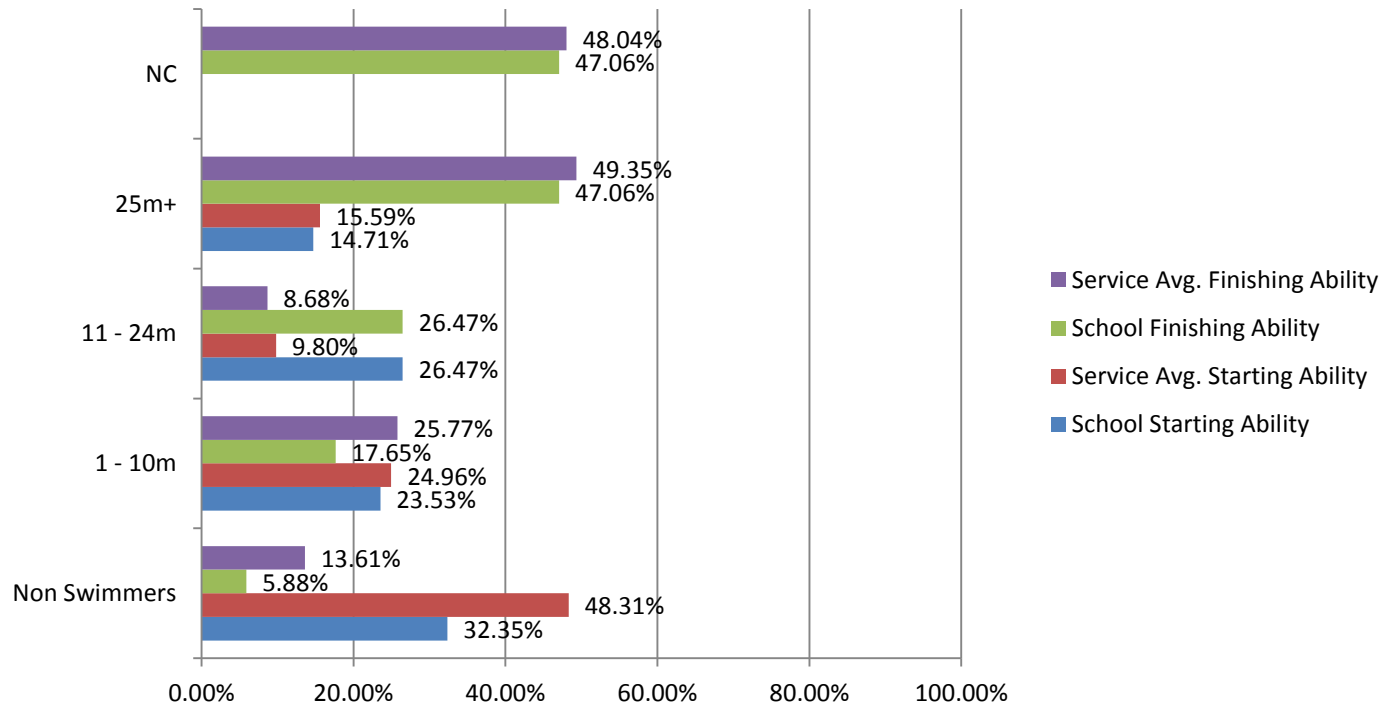
18 Weeks	Stocksbridge Junior, Block 1 1.30pm		Y4	
	School Starting Ability	Service Avg. Starting Ability	School Finishing Ability	Service Avg. Finishing Ability
<b>No. of Children</b>	31	27.92	31	27.16
<b>Non Swimmers</b>	38.71%	48.31%	3.23%	13.61%
<b>1 - 10m</b>	41.94%	24.96%	22.58%	25.77%
<b>11 - 24m</b>	19.35%	9.80%	12.90%	8.68%
<b>25m+</b>	0.00%	15.59%	61.29%	49.35%
<b>NC</b>			58.06%	48.04%

## Stocksbridge Junior, Block 1 1.30pm: Y4: 18 Weeks



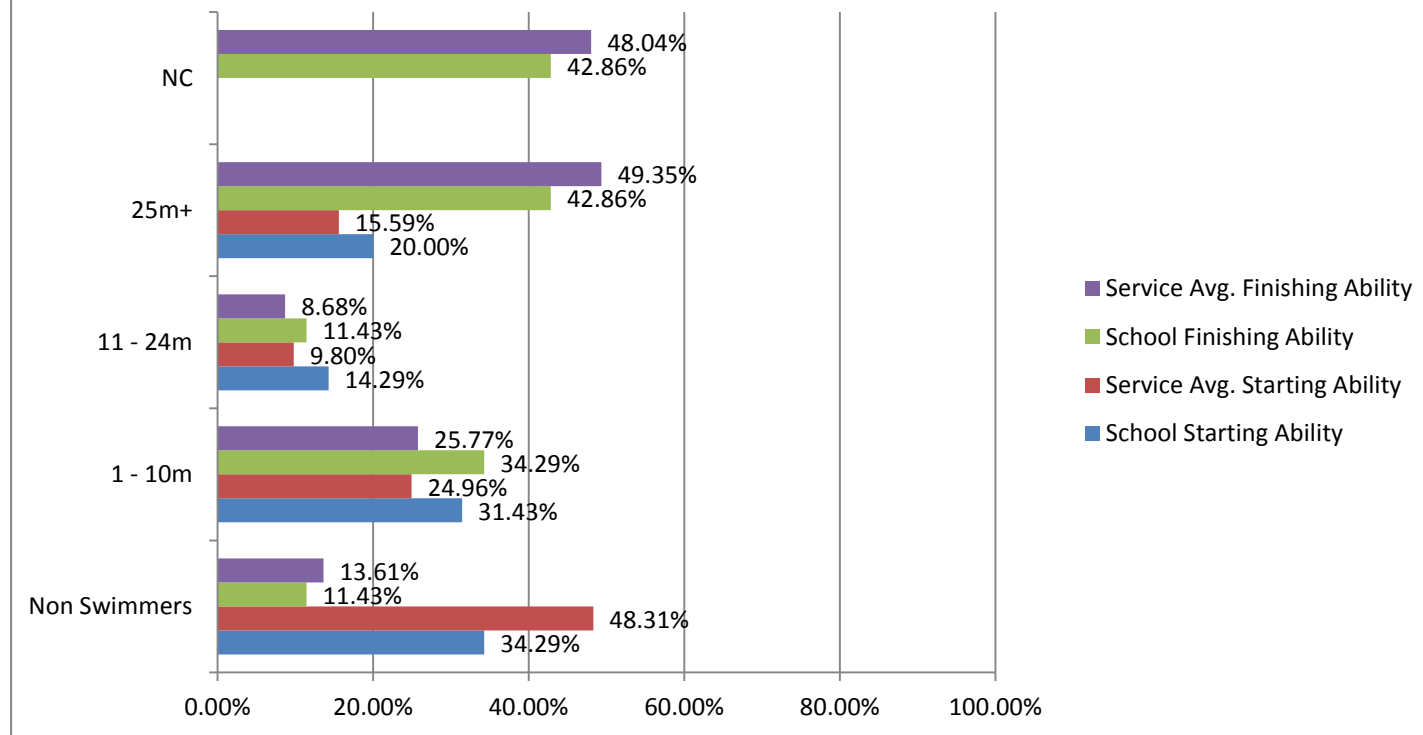
9 Weeks	Stocksbridge Junior, Block 2 1.30pm (Class 1)		Y4	
	School Starting Ability	Service Avg. Starting Ability	School Finishing Ability	Service Avg. Finishing Ability
<b>No. of Children</b>	34	27.92	34	27.16
<b>Non Swimmers</b>	32.35%	48.31%	5.88%	13.61%
<b>1 - 10m</b>	23.53%	24.96%	17.65%	25.77%
<b>11 - 24m</b>	26.47%	9.80%	26.47%	8.68%
<b>25m+</b>	14.71%	15.59%	47.06%	49.35%
<b>NC</b>			47.06%	48.04%

## Stocksbridge Junior, Block 2 1.30pm (Class 1): Y4: 9 Weeks



9 Weeks	Stocksbridge Junior, Block 2 1.30pm (Class 2)		Y4	
	School Starting Ability	Service Avg. Starting Ability	School Finishing Ability	Service Avg. Finishing Ability
<b>No. of Children</b>	35	27.92	35	27.16
<b>Non Swimmers</b>	34.29%	48.31%	11.43%	13.61%
<b>1 - 10m</b>	31.43%	24.96%	34.29%	25.77%
<b>11 - 24m</b>	14.29%	9.80%	11.43%	8.68%
<b>25m+</b>	20.00%	15.59%	42.86%	49.35%
<b>NC</b>			42.86%	48.04%

## Stocksbridge Junior, Block 2 1.30pm (Class 2): Y4: 9 Weeks



\* If the percentage doesn't add up to 100% then a child/multiple children were not assessed (e.g. they were away during the assessment week).

Many thanks, the School Swimming team.